

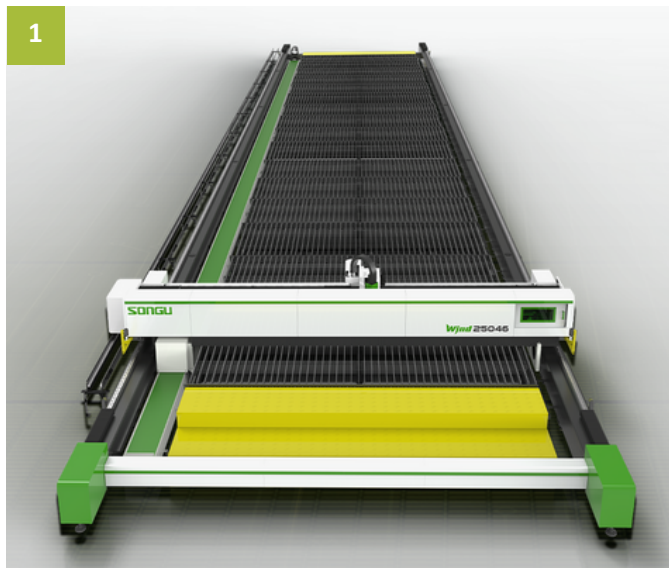
## WIND 13035/13040/13045/25035/25040/25045

### LINE RAIL TYPE ULTRA-LARGE FORMAT FIBER LASER CUTTING MACHINE

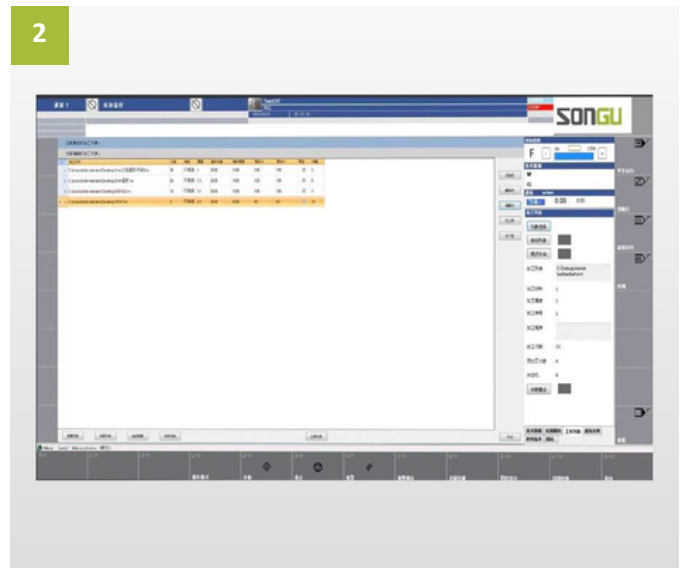
#### ■ Customer benefits

- Zero-clearance assembled machine bed avoids vibration. Secondary annealing of the machine bed eliminates internal stress, and it will not deform during long-term operation.
- Applying Bochun control system with EtherCat bus to achieve fast computing speed, instant response and strong scalability.
- Crossbeam employs cold drawn & extruded aluminum, with light weight, high rigidity, good dynamic characteristics, high precision and stable structure.
- The processing list can be set at one time to complete the cutting of different plates, different formats and different workpieces, and the unattended mode will be extremely helpful under this situation.
- Capacitive sensor head from PRECITEC can automatically find the edge, and auto focus and positioning are available, which is perfectly suitable for cutting of uneven workpiece.
- Zoned dedusting design in the cutting area, dedusting and filtering system of large air volume, both sides of the cutting area are equipped with dust collecting devices and smoke purifier, which achieves complete smoke exhaust. Also, it is equipped with flame retardant structure to ensure safe production.

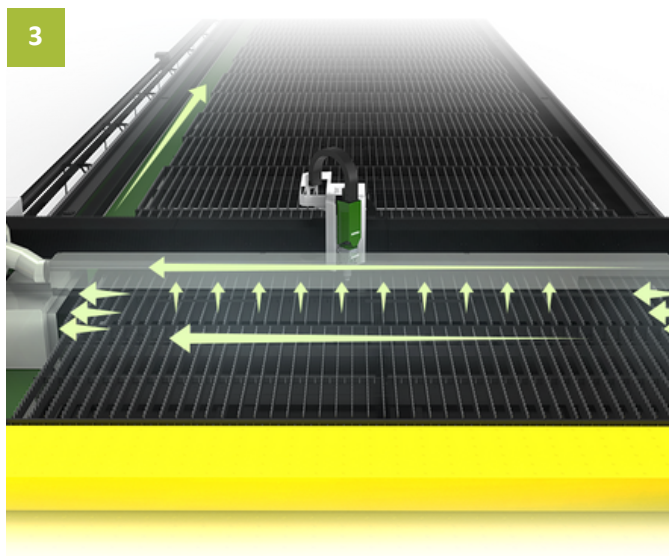
### ■ Characteristics



Ultra-large format zero-clearance  
line-rail splicing machine bed



System supports  
unmanned processing



Zoned dust removal design  
with dual side suction



Applying Bochu control  
system with EtherCat bus

## ■ Specification

Model	WIND13035	WIND13040	WIND13045	WIND25035	WIND25040	WIND25045
Working area	13000×3500mm	13000×4000mm	13000×4500mm	25000×3500mm	25000×4000mm	25000×4500mm
Laser power	6000~30000W	6000~30000W	6000~30000W	6000~30000W	6000~30000W	6000~30000W
Positioning accuracy	±0.1mm/m	±0.1mm/m	±0.1mm/m	±0.1mm/m	±0.1mm/m	±0.1mm/m
Repeated positioning accuracy	±0.05mm/m	±0.05mm/m	±0.05mm/m	±0.05mm/m	±0.05mm/m	±0.05mm/m
Max positioning acceleration	0.6G	0.6G	0.6G	0.6G	0.6G	0.6G
Max coordinated speed	80m/min	80m/min	80m/min	80m/min	80m/min	80m/min
Max load capacity	1300kg/m	1500kg/m	1700kg/m	1300kg/m	1500kg/m	1700kg/m
Weight	8500Kg	8700Kg	8900Kg	13580Kg	13820Kg	14100Kg
Overall dimension	17100×5630 ×2000mm	17100×6410 ×2000mm	17100×6850 ×2000mm	31350×5630 ×2000mm	31350×6410 ×2000mm	31350×6850 ×2000mm