



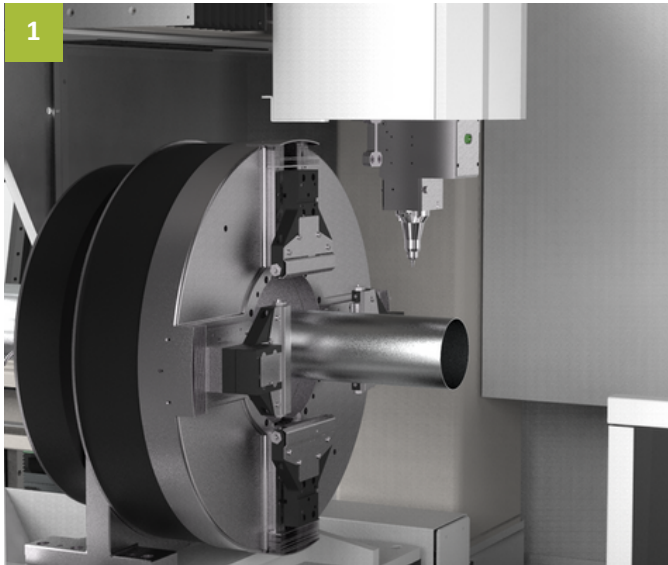
HyTube 6512/6522/6532

TUBE FIBER LASER CUTTING MACHINE

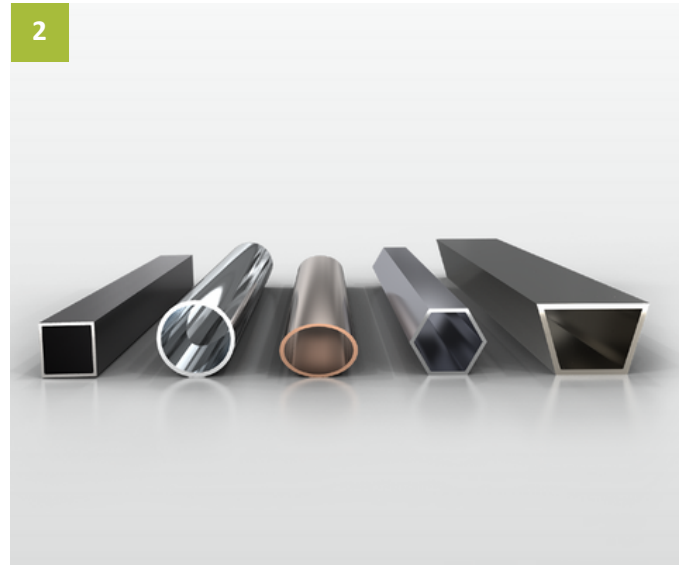
■ Customer benefits

- Hydraulic lifting platform, stable and efficient cutting;
- The key components are all German accessories, high-end configuration, good stability and durability;
- Driven by high-precision servo motor, equipped with high-precision transmission mechanism, high installation accuracy, large transmission torque, small transmission error, and good dynamic characteristics;
- Equipped with automatic energy-saving device, the machine will automatically enter the hibernation state when the equipment is suspended for more than 5min;
- Optional CCD eagle eye recognition technology, optical eye search edge, extremely fast. Supports secondary cutting function, secondary processing is easy, and waste cutting can also be handled freely;
- Developed variable frequency cutting zoom perforation technology ensures high-efficiency and high-quality processing of plates of different thicknesses and materials. All process parameters can be fully digitally controlled, which greatly reduces manual intervention and is intelligent and simple.

■ Characteristics



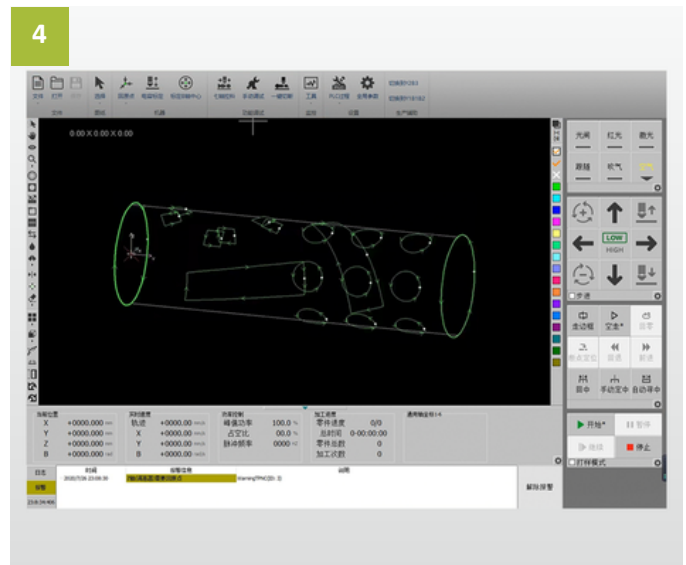
Laser cutting head with high sensing accuracy and fast cutting speeds



Suitable for various processing of different tubes



Automatic loading and unloading



Professional pipe cutting software for uninterrupted operation

■ Specification

Model	HyTube6512	HyTube6522	HyTube6532
Working width	Φ20-120×6500mm	Φ20-220×6500mm	Φ20-320×6500mm
Laser power	3000~6000W	3000~6000W	3000~6000W
Positioning accuracy	±0.05mm/m	±0.05mm/m	±0.05mm/m
Repeated positioning accuracy	±0.03mm/m	±0.03mm/m	±0.03mm/m
Max positioning acceleration	1.0G	1.0G	1.0G
Max coordinated speed	100m/min	100m/min	100m/min
Max load capacity	70Kg	200Kg	400Kg
Weight	6300kg	6400kg	6500kg
Overall dimension	12250×2350×2600mm	12250×2350×2600mm	12250×2350×2600mm

HyTube6512: Φ10≤ Round Tube ≤Φ120, □10≤ Square Tube ≤□80, Rectangular≤ 100×50, Channel Steel≤10#, I-beam≤10#

HyTube6522: Φ15≤ Round Tube ≤Φ210, □15≤ Square Tube ≤□150, Rectangular≤ 180×100, Channel Steel≤20#, I-beam≤20#

HyTube6532: Φ15≤ Round Tube ≤Φ310, □15≤ Square Tube ≤□220, Rectangular≤ 250×150, Channel Steel≤30#, I-beam≤30#