



WR SERIES

AUTOMATIC POWERTRAIN LASER WELDING PRODUCTION LINE

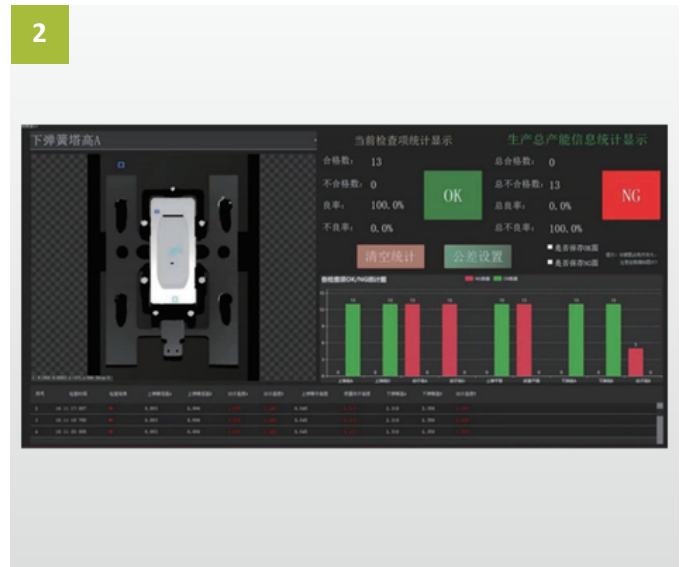
■ Customer benefits

- It is a precision machine tool structure, adopts an integrated laser system, with electromagnetic induction preheating, automatic loading and unloading function. It is equipped with a multi-position rotary table, an automatic pressing mechanism, a dust removal and purification system, etc. High-end configuration, excellent performance.
- High efficiency welding, flexible production, with nice clean weld seam, could replace the electronic beam welding.
- It has the functions of multi-solution, self-inspection system, welding process monitoring system, high stability of the whole machine system, and wide scope of application is available.
- High-quality welding laser source, high welding precision, nice clean welding effect and high product quality consistency.
- It applies to the welding of powertrain parts, gear, flywheel, planet carrier and other structures.

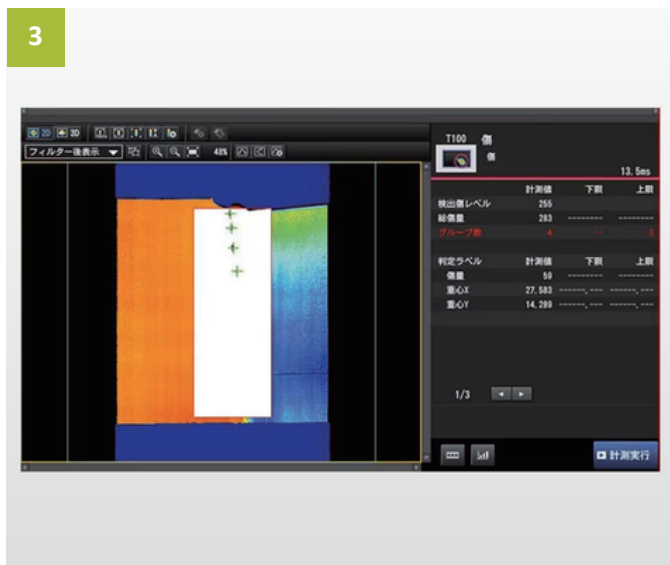
Characteristics



Automatic loading and unloading



Weld seam monitoring system



Penetration detection system



Comprehensive safety equipment and measures