



TUBE 6512/6524/7524

TUBE FIBER LASER CUTTING MACHINE WITH AUTO-LOADING SYSTEM

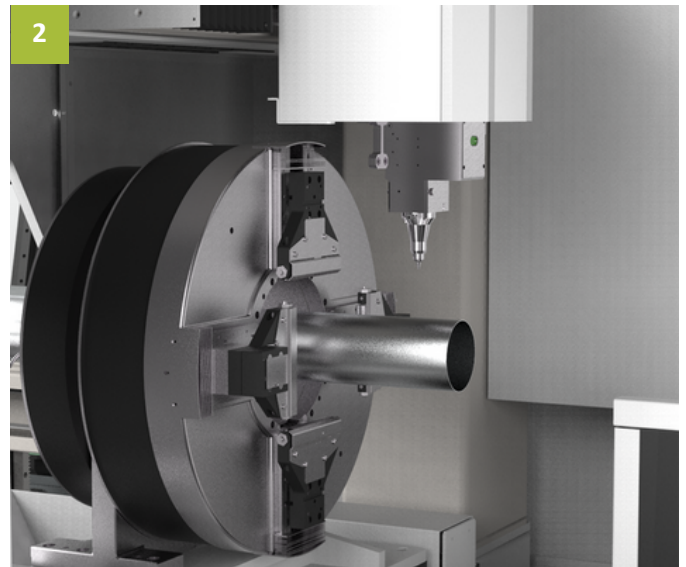
■ Customer benefits

- Machine bed: large gantry milling, 600°C heat treatment , 24 hours cooling inside the furnace to ensure the steel welded then guarantee the machine tool long term accuracy and stability;
- Support offset tube center error in production to improve through holes cutting precision. Beside standard tube like square and round tube, TubePro also supports profiles and free form tube production of U/L/H/T channels, Obround oval and polygon etc.
- The equipment enjoy power failure memory; retreat cutting; automatic fault alarm and emergency stop; fault info auto-display.
- Software can help to Auto Find Tube Center in Production, and enjoy Active Control at Corner Cutting.

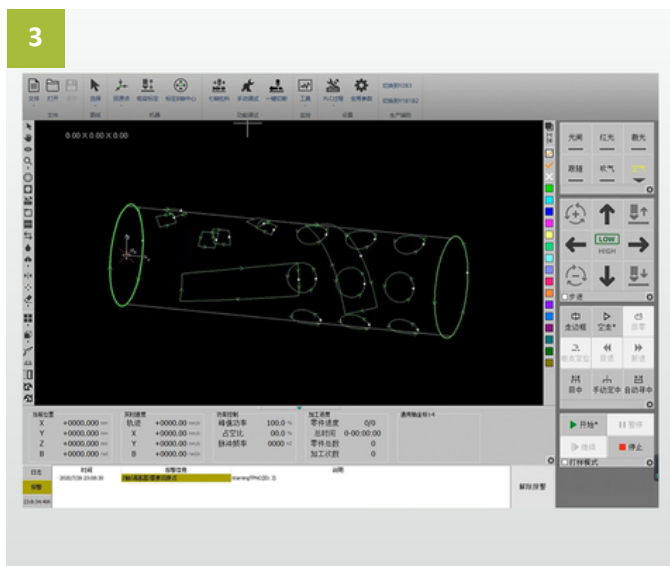
Characteristics



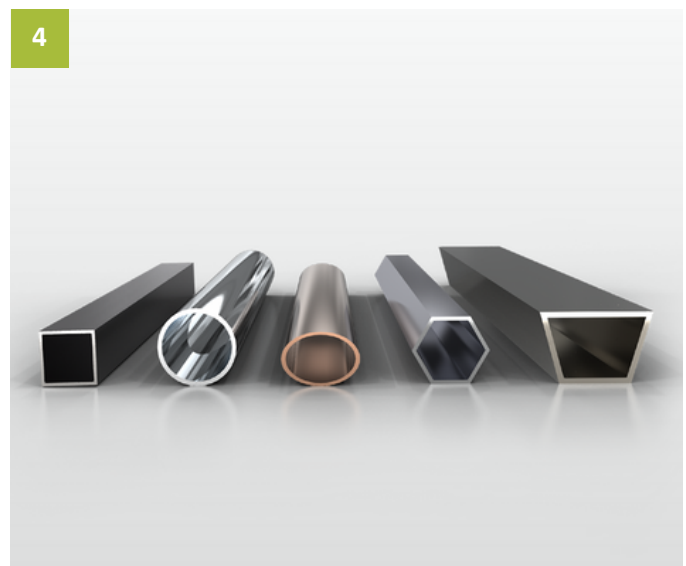
efficiently full automatic
loading function(optional)



Automatic tube
length identificaiton system



Material-saving
profesional tube cutting system



Automatic clamping
system for various tube shapes

■ Specification

Model	Tube6512	Tube6524	Tube7524
Working width	Φ10-120×6000mm	Φ20-240×6000mm	Φ20-240×7500mm
Laser power	3000~6000W	3000~6000W	3000~6000W
Positioning accuracy	±0.05mm/m	±0.05mm/m	±0.05mm/m
Max positioning acceleration	0.8G	0.8G	0.8G
Max coordinated speed	60m/min	60m/min	60m/min
Weight	4300kg	4500kg	4800kg
Overall dimension	12000×2200×2300mm	12000×2200×2300mm	13600×2200×2300mm