

HyCoil 4015

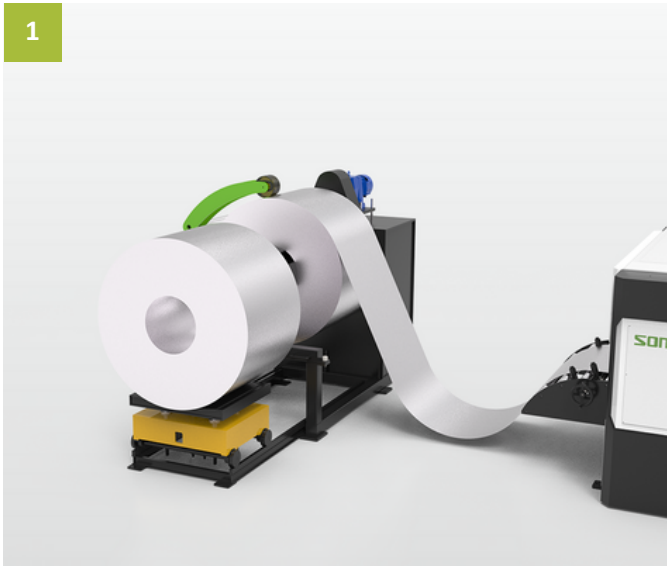
HYCOIL CUTTING LASER MACHINE

■ Customer benefits

- Automatic uncoiling, leveling, feeding, cutting, and unloading easy for flexible production arrangement.
- Compact design, small floor space, low maintenance cost.
- Equipped with high-precision leveling, feeding and cutting systems, available for 24-hour working, highly improve the productivity.
- Support mixed-graphic nesting, no die mold needed, higher material utilization rate.
- Stable uncoil control, less deformation and twisting.

■ Characteristics

1



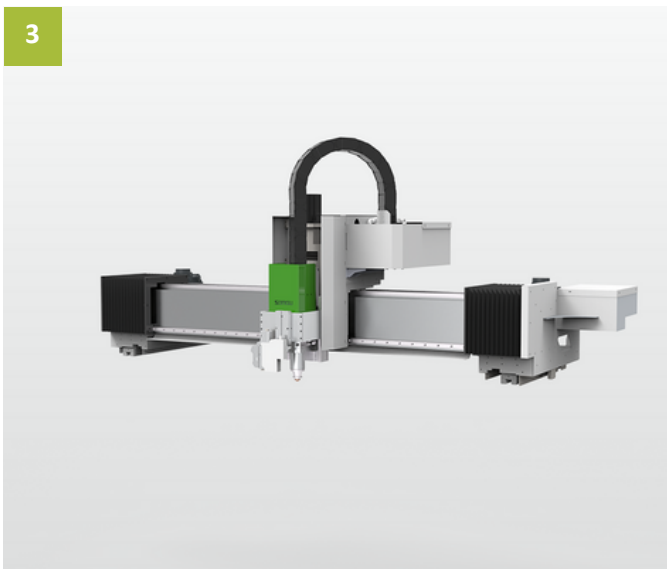
stable uncoil control and
smooth loading process

2



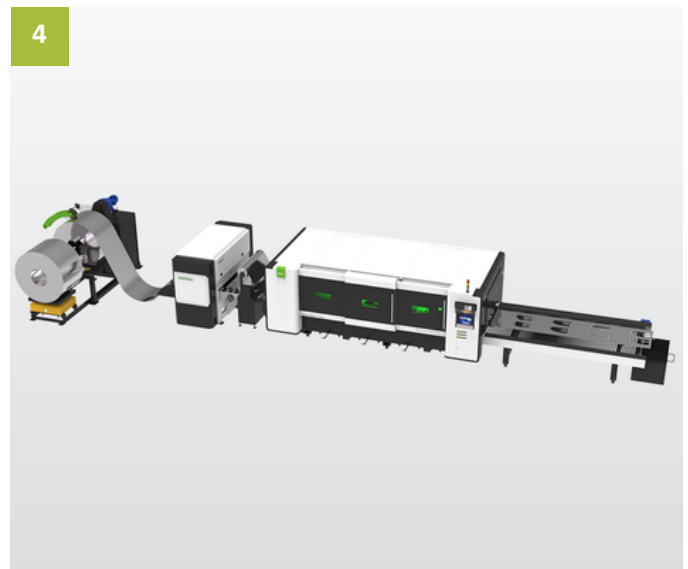
Adoption of high-precision
leveling machine

3



Lightweigh beam design

4



Compact design

■ Specification

Model	HyCoil4015
Working area	4050× 1550mm
Laser power	3000W
Positioning accuracy	±0.05mm/m
Repeated positioning accuracy	±0.03mm/m
Max coordinated speed	140m/min
Max positioning acceleration	1.4G
Max uncoiling thickness	3mm
Weight	15000Kg
Overall dimension	11000×3600×2100mm