



CUBE 1313

CUBE SERIES FIBER LASER CUTTING MACHINE

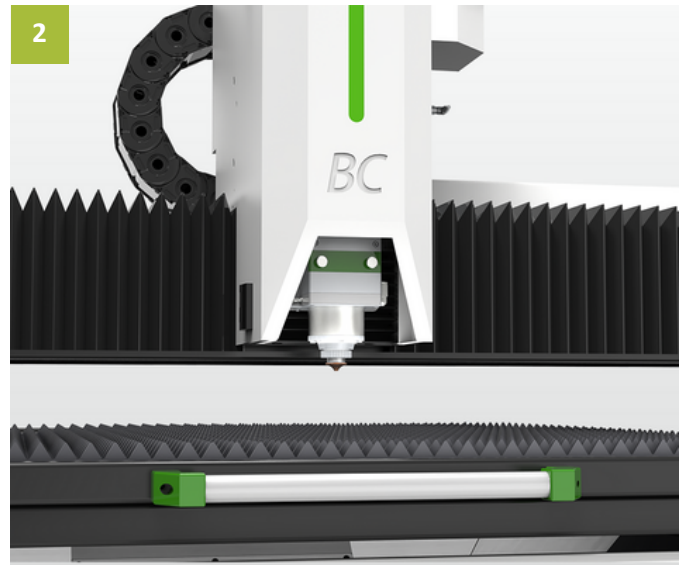
■ Customer benefits

- Gantry double-sided drive device, imported servo motor, equipped with high-precision reducer and rack and pinion, efficient and stable transmission;
- High-strength aluminum alloy extruded profile body, the overall light weight, high rigidity, small high-speed running inertia, fast action response, precise control;
- Adopting laser special control system, fast response, intelligent and efficient, easy to control; IPG laser imported from Germany, high photoelectric conversion rate, low power consumption;
- The appearance of the unique industrial design, which has won the appearance patent, conforms to the European standard design standard, and the control is more convenient and efficient; the multi-modular design can work 24 hours without interruption;
- Adopting Swiss RAYTOOLS non-contact capacitive sensor head, stable and reliable performance, high safety protection;
- Fully enclosed protection design, equipped with laser radiation safety windows that meet international safety standards, to ensure safe production;
- Energy-saving design dual-temperature and dual-control patented water chiller, high-power electric control box refrigeration and air conditioning, to ensure equipment cooling equivalent with lower power consumption, to ensure that electronic components work under constant temperature conditions;
- Embedded design of all cutting parameters, automatic selection and setting of the system real-time monitoring of internal working conditions, reducing manual intervention.

■ Characteristics



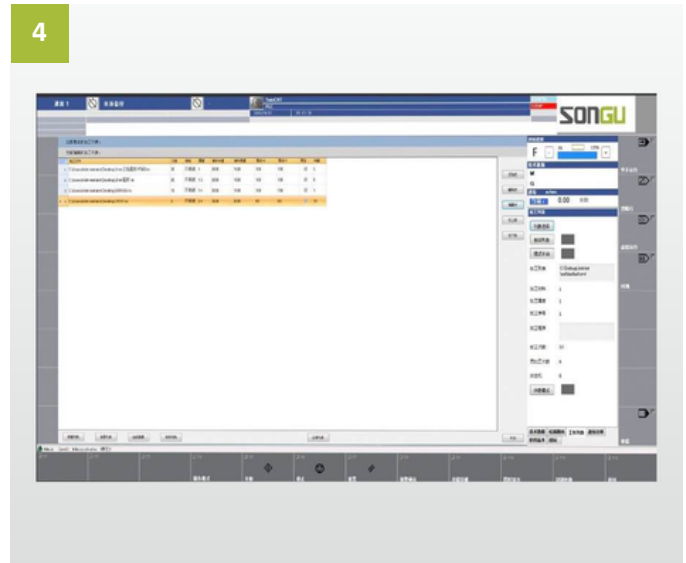
Fully enclosed protection design



Adopting Swiss RAYTOOLS non-contact capacitive sensor head



Multi-modular design



Laser special control system

■ Specification

Model		CUBE1313
Working area		1350 × 1350 mm
Plate size		1300 × 1300 mm
Laser power		1000~6000W
Positioning accuracy		±0.05mm/m
Repeated positioning accuracy		±0.03mm/m
Maximum accelerated acceleration		0.8G
Maximum coordinated speed		110m/min
Maximum workpiece weight		245kg
Weight		1500kg
Overall dimension		2250×2500×2273mm